



## COMPANY BROCHURE



# Earthlab /

*Deriving value from  
your mineral endowment.*



## ABOUT US

Since 2012, the Earthlab Team has proudly served the minerals exploration and mining industry. With our unique combination of technical expertise, a solution-driven mindset, and an innovative approach, every project we have undertaken has been well received by the relevant stakeholders. As a geological consulting company incorporated in South Africa, we have earned market recognition for our success rate of delivery across the globe.

Today, we stand as your trusted partner in geological exploration, project management, mineral resource estimation, mining studies, and mining geology. With a deep understanding of the industry and its challenges, we provide effective services from exploration to mining to derive optimal value for your investment.

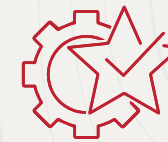




## CORE VALUES

Earthlab is in the business of creating potential by identifying opportunities to unlock value.

### Our business is built on:



- ★ Technical excellence
- ★ Passionate and skilled teamwork
- ★ Industry trust
- ★ Absolute tenacity
- ★ Integrity

...to successfully deliver the desired results for our clients!



## DEPARTMENTS

Our Vertical Integration ensures seamless transition of project value accretion along the mine life cycle.

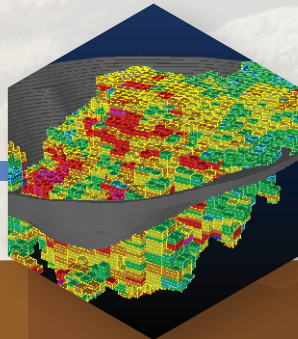
Earthlab is a South African geological consulting company with a global footprint.

Our products and services are guided by our team's passion to deliver solutions that enhance the value of your mineral assets across the entire mine value chain. Your success is our priority, and we're dedicated to customising our expertise to optimise every aspect of your project.

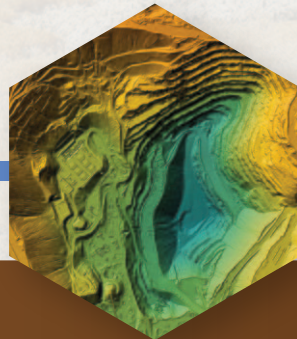
As a trusted geological consulting company in South Africa and beyond its borders, we offer a suite of services encompassing geological and mining expertise. Carried out by our team of experienced professionals, we leverage cutting-edge technology and industry-leading methodologies to deliver unparalleled insights into the geological landscape.



**Mineral  
Exploration**



**Mineral  
Resources  
and Reserves**



**Mining Studies  
and Mining  
Geology**



**Environmental  
Services**



**Automation and  
Bespoke Data  
Solutions**





## WHAT WE OFFER



GIS and Desktop  
Studies



Exploration Target  
Generation



Exploration Design,  
Management  
and Execution



Specialised Geotechnical  
Logging and Evaluation



Project and Cost  
Management



Exploration Safety  
Management



Field and Assay  
QA & QC



Geological Database  
Management



Data  
Automation



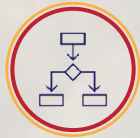
Geological  
Modelling



Mineral Resource Estimation  
and Classification



Competent Person  
Technical Reports



PEAs, Conceptual Level  
Mining Studies



Mining Services  
and Consulting



Mining Grade  
Control



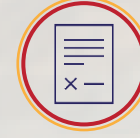
Production  
Geology



Process  
Optimisation



Technical Due Diligence  
and Audit



Mineral Rights  
Management



Mergers and Acquisitions  
Technical Integration



Environmental, Social  
and Governance (ESG)



## MINERAL EXPLORATION

### List of services:

We provide our clients with tailored solutions in custom exploration project design, management, execution, and reporting. We cover a wide range of exploration services ensuring the highest safety standards and quality control.

#### Exploration techniques

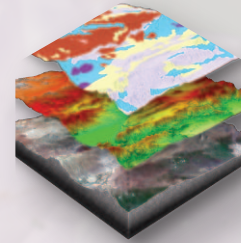
- ★ Remote sensing and GIS
- ★ Airborne and ground exploration geophysics
- ★ Geological and structural mapping
- ★ Surface sampling
- ★ Drilling:
  - ★ Rig management and drill design planning
  - ★ Diamond core, percussion and RC drilling
  - ★ Downhole geophysics
  - ★ Geological and geotechnical core logging
  - ★ Core and drill chip sampling
- ★ Geochemical data acquisition and interpretation

#### Reporting

We provide our clients with detailed geological, technical and competent persons reports to suit their needs.

#### Audits

We conduct exploration audits and perform due diligence on projects at any stage of development.







## Data Integration

To successfully integrate and align technical information requires user competence. We offer the integration of various technical data and information standards into a practical model, ensuring successful migration and transformation.

## Geological Modelling

Graphical interpretation is undertaken through our data visualisation and integration using advanced 2D and 3D modelling techniques. Our Mineral Resource Estimates encompass well understood physical geology and mineralisation, which ensures the conversion to Mineral Reserves are practical.

## Industry-Standard Software

We make use of various reliable and versatile software packages to provide confidence in our end products.

## Best Practice

We continuously follow robust and trustworthy practices to guarantee credibility, providing assurance to project owners and stakeholders.

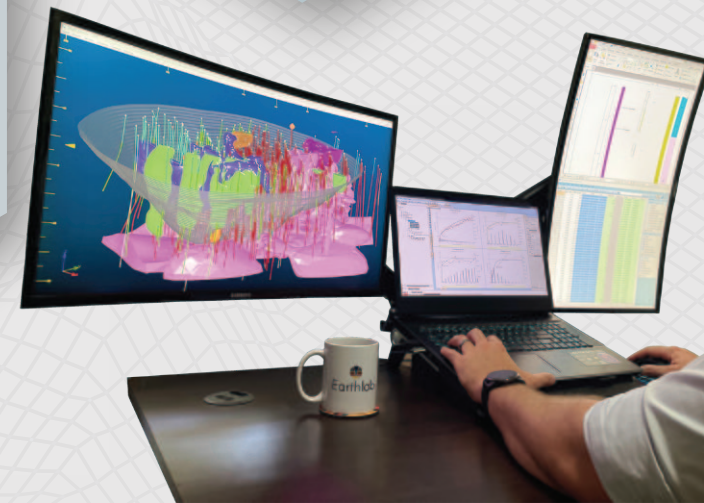
## CRIRSCO Reporting

Our technical reports are compliant with CRIRSCO codes such as SAMREC, JORC, and NI43-101 for private and multinational listed mining and exploration companies on the JSE, NYSE, LSE, TSX-VE, and ASX.

## MINERAL RESOURCES AND RESERVES

### Mineral Resource Estimation

We apply advanced and innovative Mineral Resource Estimation techniques and methodologies to geological exploration and mine sampling data, which derives relevant outputs. We combine experience, advanced technical skills, and sound geological interpretation, which results in industry standard end products that have been well received by all stakeholders.





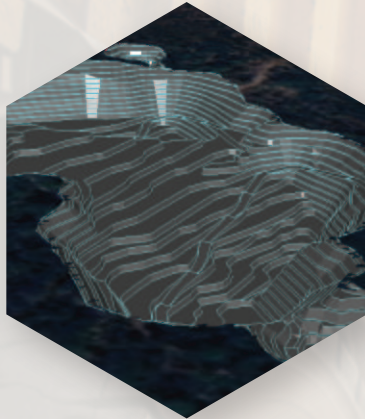


## MINING STUDIES AND MINING GEOLOGY

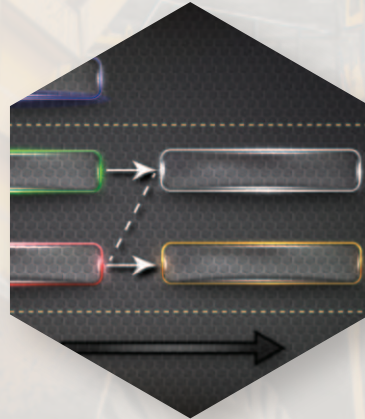
Open Pit and Underground:



Mining Studies  
from Concept to  
Feasibility



Mine Planning,  
Design and  
Optimisations



Resource to  
Reserve  
Conversions



Due Diligence and  
Technical Reports



Financial  
Modelling



Grade  
Control



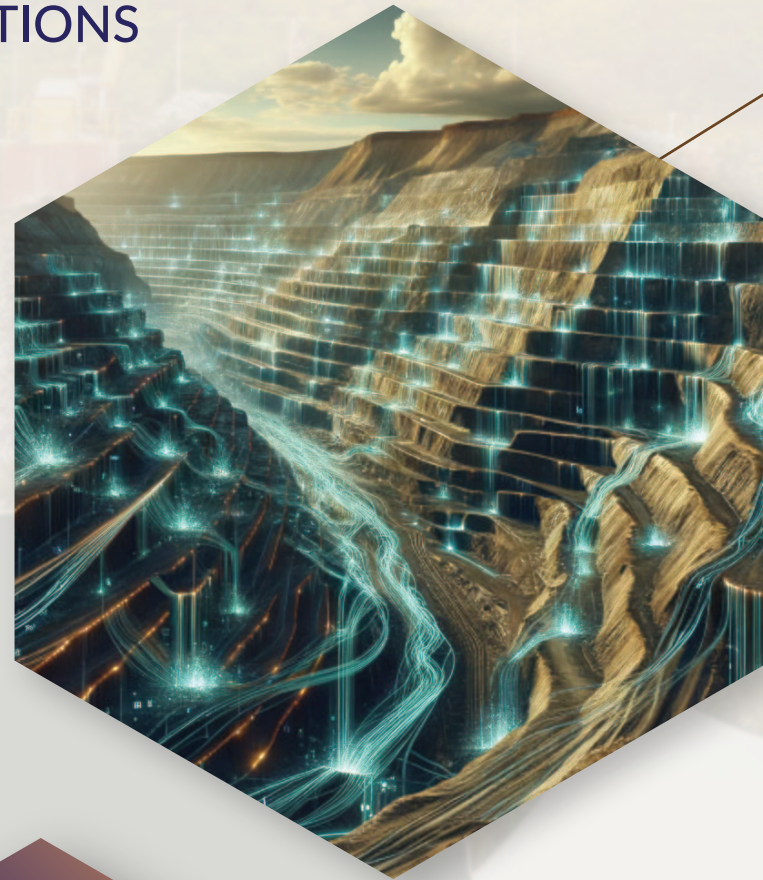
Production  
Geology



## AUTOMATION AND BESPOKE DATA SOLUTIONS

### Automation Services

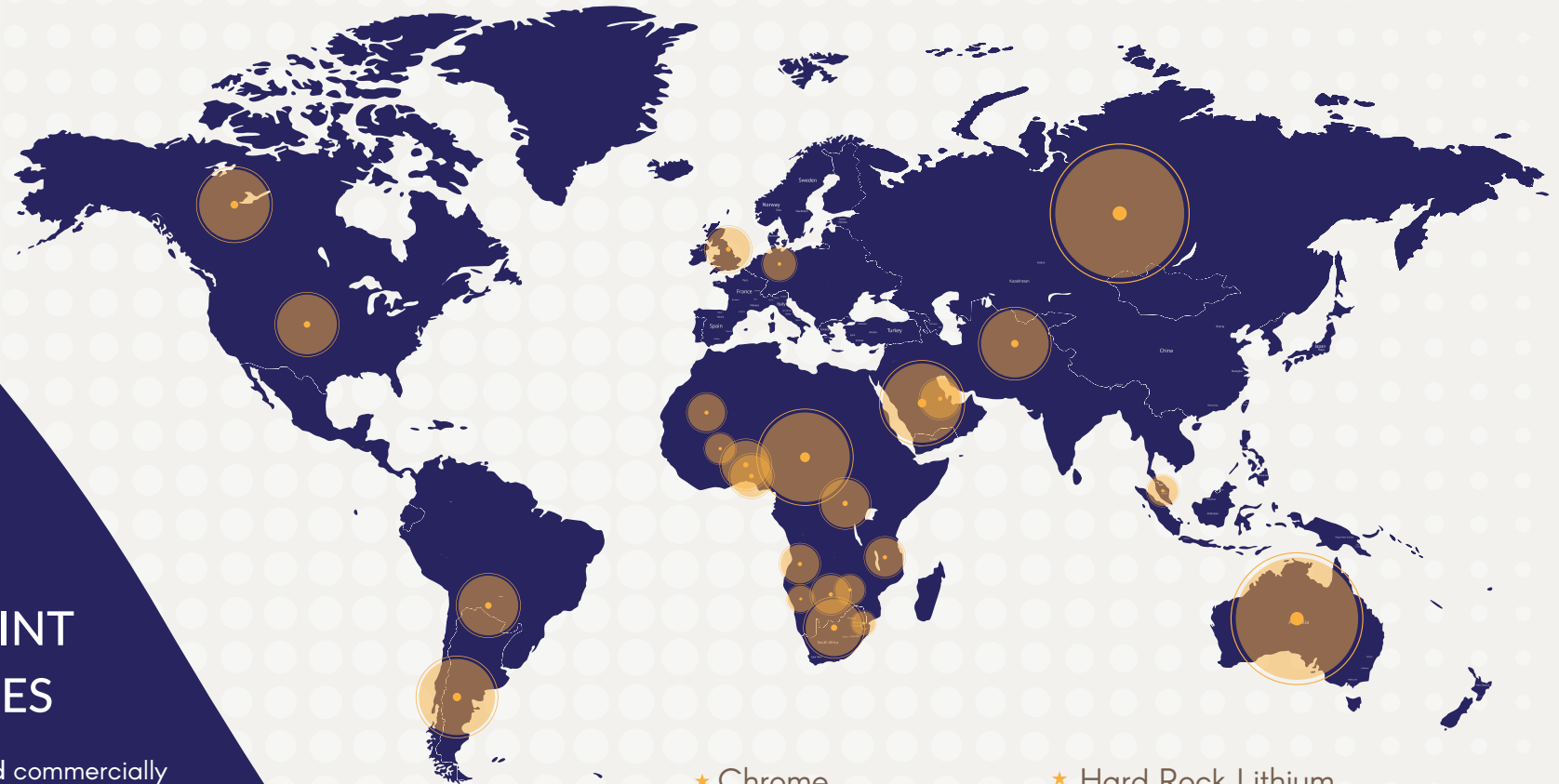
Save critical time and minimise repetitive data process tasks by streamlining your geological processes. Data automation standardises your workflow to maximise accuracy and mitigate input errors.



### Bespoke Data Solutions

Tailored data solutions for geosciences, providing intuitive tools designed to enhance geological interpretations and analyses.

From grassroots, greenfields and brownfields exploration to mineral resource and data management, our end-to-end services are comprehensive and driven by our experienced and skillful team.

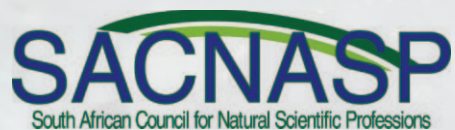


- 





## STRATEGIC PARTNERS AND SUPPLIERS





## OUR CLIENTS





## MANAGEMENT TEAM



**Deon du Plessis**  
Chief Executive Officer (CEO)

B.Sc (Hons) Geology, M.Sc Geology –  
University of the Free State | Pr.Sci.Nat:  
00050|05 | FGSSA: 96338



**Phillip Seokame**  
Exploration Executive

B.Sc (Hons) Mining Geology – University  
of the Witwatersrand, B.Sc Exploration  
Geochemistry – University of the Western  
Cape | Cand.Sci.Nat: 115983



**Buyi Mkhwanazi**  
Environmental Coordinator

B.Sc (Hons) Environmental Management,  
Pr.Sci.Nat: 162346



**Khumbula Mangena**  
Exploration and Mining Geologist

B.Sc Geology – University of Zimbabwe |  
Cert.Sci.Nat: 117645 | GSSA: 967258



**Tebogo Phokanoka**  
Exploration and Mining Geologist

B.Sc (Hons) Geology – University of  
Johannesburg | Pr.Sci.Nat: 116024



**Deon van Wyk**  
Mining Engineer

B.Eng Mining – University of Pretoria |  
PrEng ECSA: 20130538 / MSAIMM:  
703269



**Liesl Diesel**  
Human Resource Manager



# Contact Us



+27 (0)11 064 5600



invest@earthlabtech.com



www.earthlabtech.com



Office 13, Spaces,  
Willow Wood Office Park,  
220 3rd Street,  
Broadacres Park,  
Johannesburg, 2021



# Earthlab /

*Deriving value from  
your mineral endowment.*